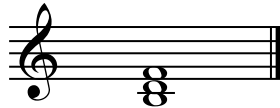


Chords Part 6 - The Diminished Triad

A **diminished triad** (in root position) is made up of a root note, a note a minor 3rd above the root note and a note a diminished 5th above the root note.

In the following chord, B is the root note, D is a minor 3rd above B and F is a diminished 5th above B.

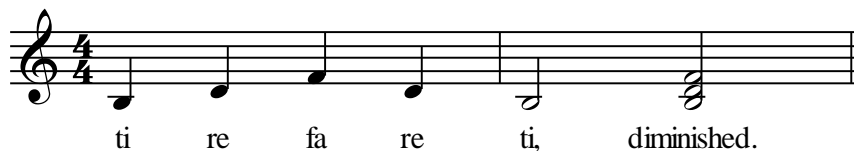
Diminished Triad



The above chord could be chord vii^o in C Major or chord ii^o in A minor as the key signature of both is the same and B is the 7th scale degree in C Major and the 2nd scale degree in A minor. (Note the use of “^o” to show diminished triads).

Sing the following triad in solfa.

B Diminished Triad (Melodically)



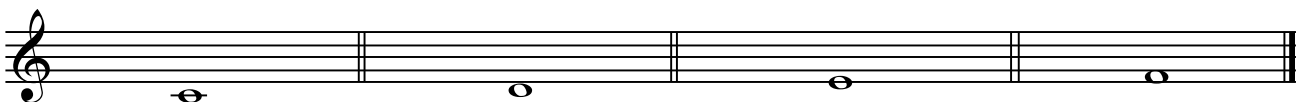
Sing the following exercise in solfa, practising the intervals found in a diminished triad.

Intervals in a Diminished Triad

Chords - Worksheet 6

Chords Question 15

Using your knowledge of interval patterns in a diminished triad, write a diminished triad on each given note.



Chords Question 16

Five triads will be played twice each. They will be either **Major**, **minor** or **diminished** triads. Write the name of each triad in the spaces provided.

3/46

1. _____ 2. _____ 3. _____ 4. _____ 5. _____