

Answers and Dictation Material

Part 1: Intervals, Scales and Melody

Question 1: Music Language – Recognition of Intervals

Musical notation in 4/4 time showing intervals: Maj 3rd, min 2nd, Perf 8ve, Aug 4th, Perf 4th.

Question 2: Music Language – Scales and Intervals

a. The Major Scale

Musical notation for the Major Scale in D major (treble clef).
OR
Musical notation for the Major Scale in D major (bass clef).
Maj 2nd Maj 2nd min 2nd Maj 2nd Maj 2nd Maj 2nd min 2nd

b. The Harmonic minor scale

Musical notation for the Harmonic minor scale in D major (treble clef).
OR
Musical notation for the Harmonic minor scale in D major (bass clef).
Maj 2nd min 2nd Maj 2nd Maj 2nd min 2nd Aug 2nd min 2nd

GROUP PERFORMANCE

UNIT 1 PRACTICE EXAMINATION

Music Language and Aural Perception

Total Marks: /37

Part 1: Intervals, Scales and Melody

Question 1: Music Language – Recognition of Intervals

(1 and a half minutes working time)

Identify the five bracketed intervals of the following melody (giving both quality and number).

Write your answers **below the brackets**.



5 marks

Question 2: Music Language – Scales and Intervals

(3 minutes working time)

Beginning from the tonic notes indicated, write the following ascending scales.

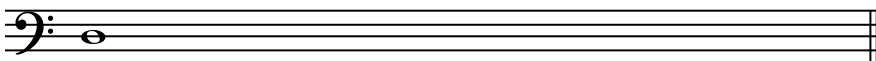
Beneath each scale, **identify** the interval between each consecutive note.

You may write in **either** treble (G) **or** bass (F) clef.

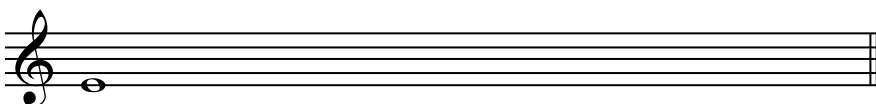
a. The Major Scale



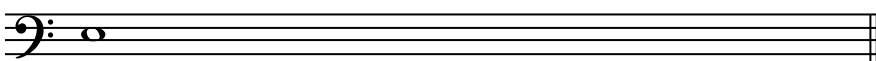
OR



b. The Harmonic minor scale



OR



6 marks

Question 3: Aural Perception – Melodic Transcription

Musical notation for Question 3, showing a melody in the treble clef and a bass line in the bass clef. The melody is circled in the second measure.

Part 2: Harmony

Question 4: Music Language – Structure of Chords

Musical notation for Question 4, showing four chords in the treble clef.

OR

Musical notation for Question 4, showing four chords in the bass clef.

Major

minor

diminished

Augmented

Musical notation for Question 4, showing four chords in the treble clef.

OR

Musical notation for Question 4, showing four chords in the bass clef.

minor

sus 4

Major

diminished

Question 3: Aural Perception – Melodic Transcription

A two part score of four bars length is given below. On the blank stave two bars of the top part are not notated.

The excerpt will be played **five** times.

Note: The time signature, key signature and the pitch (but not the duration) of the first note of the part to be transcribed are given.

On the blank stave, fully **transcribe** the missing two bars part.

8 marks

Part 2: Harmony

Question 4: Music Language – Structure of Chords

(3 minutes working time)

From the tonic notes given, write the chords as indicated below.

You may use **either** treble (G) **or** bass (F) clef.

OR

Major

minor

diminished

Augmented

OR

minor

sus 4

Major

diminished

8 marks